

TANPA BIAYA
ANGGUNAN
SAMPAI DENGAN

15
TAHUN



SCAN ME!

0819-0116-6000

Nikmati Listrik dari Tenaga Surya
Bersih, Ramah Lingkungan tanpa
perlu khawatir kenaikan tarif
listrik PLN



utomo SOLARUV®
Excellence in Solar Roofing

Authorized Distributor & Service Center

SUNGROW
Clean power for all



★ ★ **SEGERA PESAN** ★ ★
PLTS ATAP SOLARUV UNTUK RUMAH ANDA .



Paket Bronze*

1 kWp Power Installation
PV Module
Microinverter (Hoymiles)
Array Mounting
Cable & Accessories
Installation & Permitting

Paket Silver*

2 kWp Power Installation
PV Module
Inverter (Sungrow / Hoymiles)
Array Mounting
Cable & Accessories
Installation & Permitting

Paket Gold*

3 kWp Power Installation
PV Module
Inverter (Sungrow / Hoymiles)
Array Mounting
Cable & Accessories
Installation & Permitting

Paket Platinum*

4 kWp Power Installation
PV Module
Inverter (Sungrow / Hoymiles)
Array Mounting
Cable & Accessories
Installation & Permitting

Paket Diamond*

5 kWp Power Installation
(1 Phase)
PV Module
Inverter (Sungrow / Hoymiles)
Array Mounting
Cable & Accessories
Installation & Permitting

Paket Sapphire*

5 kWp Power Installation
(3 Phase)
PV Module
Inverter (Sungrow / Hoymiles)
Array Mounting
Cable & Accessories
Installation & Permitting

Paket Ruby*

10 kWp Power Installation
PV Module
Inverter (Sungrow / Hoymiles)
Array Mounting
Cable & Accessories
Installation & Permitting

CICILAN
BUNGA 0% SELAMA
36 BULAN

KHUSUS PENGGUNA KARTU KREDIT CMB WAGS

CICILAN
BUNGA 0% SELAMA
12 BULAN

KHUSUS PENGGUNA KARTU KREDIT BCA

CICILAN
BUNGA 0% SELAMA
36 BULAN

KHUSUS PENGGUNA KARTU KREDIT BNI

CICILAN
BUNGA 0% SELAMA
12 BULAN

KHUSUS PENGGUNA KARTU KREDIT MANDIRI

Outlet SolaRUV: Surabaya, Solo, Makassar, Kediri, Medan, Banjarmasin,
Mataram, Palembang, Probolinggo, Banjarmasin dan Semarang.

@utomosolaruv

sales.residential@solaruv.co.id

Utomo Solaruv

www.solaruv.co.id

* SEMUA PAKET SUDAH MELIPUTI SURVEY & DRAWING, MONITORING SYSTEM, DAN AUTHORIZED SERVICE CENTER
• BELUM TERMASUK PPN SEBESAR 11% DAN BIAYA LOGISTIK



RESIDENTIAL INVERTER

PRODUCTS INVERTER ON GRID **SUNGROW**

SG2.0/2.5/3.0RS-S

Effisiensi **96.9 - 97.3%**

Output Power **2000 - 3000 VA**

Dimensi **320x225x120 mm**

Wifi Monitoring Included

RESIDENTIAL INVERTER ON GRID **SUNGROW** RESIDENTIAL INVERTER HYBRID **SUNGROW**

- SG3.0/3.6/4.0/5.0/6.0RS
- SH3.0/4.0/5.0/6.0RS
- SG8.0/9.0/10RS
- SH5.0/6.0/8.0/10RT
- SG5.0/6.0/8.0/10/12RT
- SG15/17/20RT

INDUSTRIAL INVERTER

PRODUCTS INVERTER INDUSTRIAL **SUNGROW**

SG125CX-P2

Effisiensi **98.5%**

Output Power **125 KVA**

Dimensi **1019x793x360 mm**

Wifi Monitoring Included

BATTERY

SUNGROW SBR096

Capacity **9.6 kWh**

Battery Type **LiFePO4 Prismatic Cell**

Dimensi **625 x 540 x 330 mm**

ENERGY STORAGE SYSTEM

SUNGROW ST101CP-50HV

Capacity **101.3 kWh**

Battery Type **LiFePO4 Prismatic Cell**

Dimensi **1000x2400x1000 mm**

LFP Battery

SUNGROW ST2752UX

Capacity **2752 kWh**

Battery type **LiFePO4 Prismatic Cell**

Dimensi **9340x2520x1730 mm**

LFP Battery

- **SUNGROW** ST101CP-50HV
- **SUNGROW** ST106CP-50HV
- **SUNGROW** ST111CP-50HV
- **SUNGROW** ST115CP-50HV
- **SUNGROW** ST120CP-50HV
- **SUNGROW** ST124CP-50HV
- **SUNGROW** ST129CP-50HV
- **SUNGROW** ST500CP-50HV*5
- **SUNGROW** ST2752UX
- **SUNGROW** ST2236UX

SINGLE PHASE MICROINVERTER **houmiles**

HM-1500

Effisiensi **96.70%**

Output Power **1500 VA**

Dimensi **280x176x33 mm**

SINGLE PHASE MICROINVERTER **houmiles**

- **HM-300/350/400**
- **HMS-300/350/400/450/500**
- **HM-1200/1500**
- **HMS-1600/1800/2000**
- **HMS-600/700/800/900/1000**

SMART MONITORING SYSTEM

SUNGROW Winet-S

Max Number Of Device **1 unit**

Dimension (mm) **48 x 132 x 36**

SUNGROW DTSD1352 Energy Meter

Measurement Accuracy **Class 0.5**

Dimension (mm) **18 x 117 x 65**

SMART ENERGY METER 1 PHASE

SUNGROW S100

SMART COMMUNICATION BOX

SUNGROW COM100E

WEATHER STATION

SUNGROW PC4 Meteostation

ACCESORIES

SolarRUV COVER CABLE TRAY 50x50°

Dimension (mm) **L 3000**

CABLE

- **SolarRUV X-Linked 1x4 WH/ BK °**
- **SolarRUV PV CABLE 1x4 MM °**
- **SolarRUV AC CABLE NYMHY 3 X 0,75 MM2 °**
- **SolarRUV AC CABLE NYV 1 X 95 MM2 °**
- **SolarRUV PV CABLE NYM 3 X 2,5 MM2 °**
- **SolarRUV COVER CABLE TRAY 100X100°**

WALKWAY

- **SolarRUV Walkway °**
- **SolarRUV M-Clip (M8X40) SS304 °**
- **SolarRUV C-Clip (M6X30) SS304 °**

BARRICADE MATERIAL

- **SolarRUV The Armest Rail L 4260 °**
- **SolarRUV The Armest Rail L 4900 °**
- **SolarRUV Pile L 600 °**
- **SolarRUV Pile L 1100 °**
- **SolarRUV Brancing °**
- **SolarRUV Clamp °**

CARPOT SYSTEM

CARPOT SYSTEM

- **SolarRUV Aluminium Carport Solar Mounting System °**
- **SolarRUV Aluminium Carport Solar Mounting System (Waterproof) °**
- **SolarRUV Steel Carport Solar Mounting System °**

PV MODULE

Jinko Solar Monofacial

■ **JKM615N-78HL4-(V)**

Effisiensi **22%**

Daya Maks (Wp) **615**

Berat (Kg) **30.6**

Dimensi (mm) **2465 x 1134 x 35**

■ **JKM570N-78HL4-(V)** ■ **JKM425N-54HL4-(V)**

■ **JKM475N-60HL4-(V)**

Jinko Solar Bifacial

■ **JKM610N-72HL4-BDVA**

Effisiensi **21.82%**

Daya Maks (Wp) **610**

Berat (Kg) **34.6**

Dimensi (mm) **2465 x 1134 x 35**

■ **JKM565N-72HL4-BDV** ■ **JKM570N-72HL4-BDV**

LONGI Solar Mono-single glass

■ **LR5-72HPH 550M (G2)**

Effisiensi **21.5%**

Daya Maks (Wp) **550**

Berat (Kg) **27.2**

Dimensi (mm) **2256 x 1133 x 35**

LONGI Solar Bifacial-dual glass

■ **LR5-72HBD 550M (G2)**

Effisiensi **21.5%**

Daya Maks (Wp) **550**

Berat (Kg) **32.3**

Dimensi (mm) **2256 x 1133 x 35**

- **LR5-72HPH 555M (G2)**
- **LR5-54HPH 415M (G2)**
- **LR5-72HBD 545M (G2)**
- **LR5-72HPH 560M (G2)**
- **LR5-54HPH 420M (G2)**

SERAPHIM SRP-545-BMA-HV

Effisiensi **21.10%**

Daya Maks (Wp) **545**

Berat (Kg) **27**

Dimensi (mm) **2278 x 1134 x 35**

CanadianSolar Canadian CS7N 665MS

Effisiensi **21.4%**

Daya Maks (Wp) **665**

Berat (Kg) **34.4**

Dimensi (mm) **2384 x 1303 x 35**

- **Seraphim SRP 390 BMD-HV**
- **Seraphim SRP 395BMD-HV**
- **Seraphim SRP 400 BMD-HV**
- **Seraphim SRP 405 BMD-HV**
- **Seraphim SRP 440 BMB-HV**
- **Seraphim SRP 445 BMB-HV**

- **Canadian CS3W 455MS**
- **Canadian CS6W 545MS**
- **Canadian CS7L 600MS**
- **Canadian CS7N 665MS**

FLOATING SYSTEM

■ **Walkway Floats**

Dimensi **1260x414x255 mm**

High Temperature Tolerance **≤ 85 C**

Low Temperature Tolerance **≥ -40 C**

PV RACKING

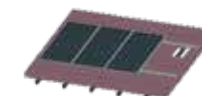


METAL ROOF SOLAR MOUNTING SYSTEM

- **L Bracket**
- **Inter Clamp**
- **Rail**
- **End Clamp**
- **Rail Spice**

utomodeck ROOF TYPE:

U 472/A, U 573, U 575/A/B, U 375, U 5

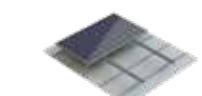


TILE ROOF SOLAR MOUNTING SYSTEM

- **Tile Roof Hook**
- **Inter Clamp**
- **Rail**
- **End Clamp**
- **Rail Spice**
- **Side View**

utomodeck ROOF TYPE:

GENTENG METAL



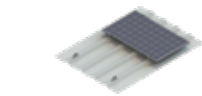
STANDING SEAM ROOF MOUNTING SYSTEM

- **L Foot**
- **TYN - 382 Clamp**
- **SolarRUV Locked Seam °**
- **TYN - 385 Clamp**
- **Rail**
- **SolarRUV Kliplok °**

Standing Seam Clamp

utomodeck ROOF TYPE:

U 450/465/600, U 650, UTOMOZIP



RAILLESS METAL SHEET MOUNTING SYSTEM

- **SolarRUV Locked Seam °**
- **SolarRUV Kliplok °**
- **Inter Clamp**
- **Railless Roof Clamp**
- **End Clamp**

utomodeck ROOF TYPE:

U 672, USS/UDS